



GAT MONTHLY MEMBERSHIP PROGRESS REPORT

Results as of: 4/30/2024

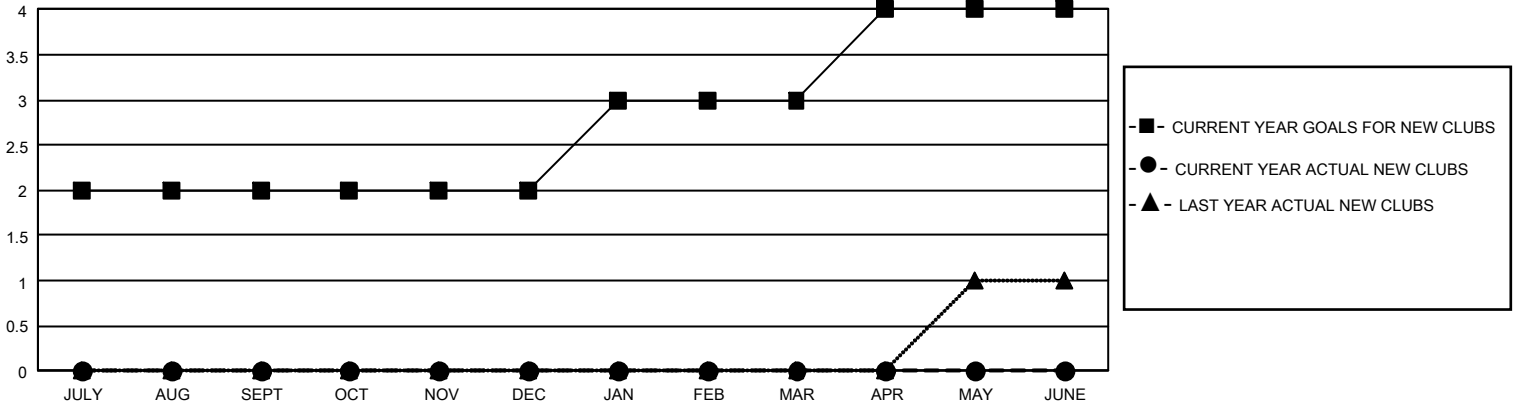
GMT Constitutional Area 8, Group C

REPORT DOES NOT INCLUDE CLUBS IN UNDISTRICTED AREAS.

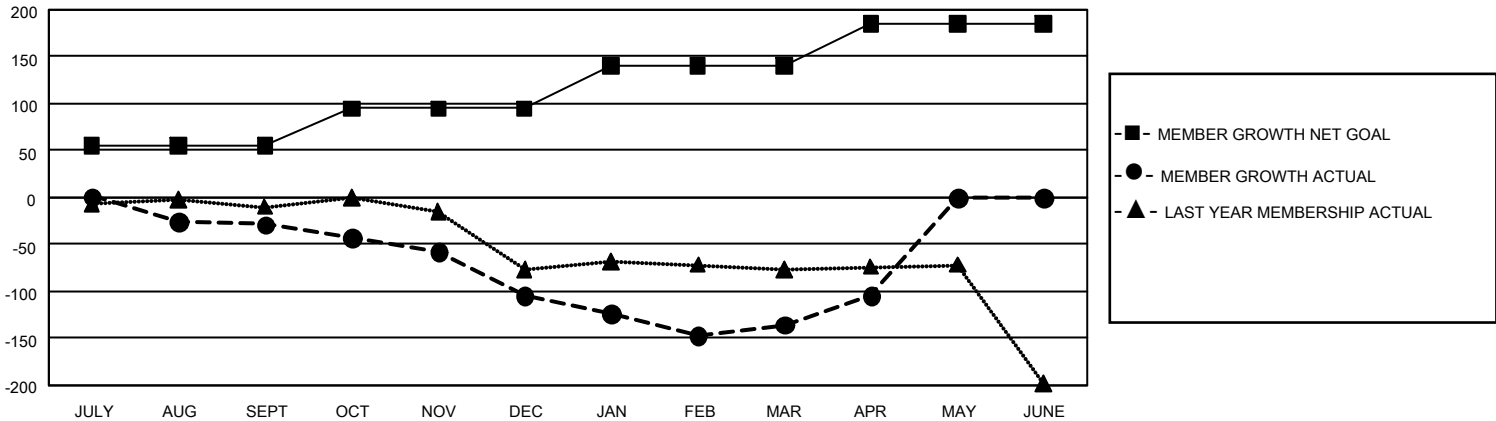
Clubs			
RESULTS FOR 2023-2024			
QUARTER	NEW CLUB GOAL	NEW CLUBS	DROPPED CLUBS
JULY/AUG/SEPT	6	0	2
OCT/NOV/DEC	0	0	2
JAN/FEB/MAR	3	0	0
APR/MAY/JUNE	3	0	1

Members			
RESULTS FOR 2023-2024			
QUARTER	MEMBER GROWTH NET GOAL	MEMBER GROWTH ACTUAL	DROPPED MEMBERS ACTUAL (including transfers)
JULY/AUG/SEPT	55	84	83
OCT/NOV/DEC	40	55	117
JAN/FEB/MAR	45	57	76
APR/MAY/JUNE	45	73	34

GOALS AND ACTUAL NEW CLUBS CUMULATIVE



GOALS AND ACTUAL MEMBERS CUMULATIVE



DROPPED CLUBS: 5	
DROPPED MEMBERS	
DECEASED	23
CLUB CANCELLED	7
OTHER	280
TOTAL	310

69 CLUBS OF 123 ADDED 1 OR MORE NEW MEMBERS

[CLICK HERE FOR CUMULATIVE MEMBERSHIP DATA](#)

<u>GENDER DISTRIBUTION</u>	
MALE	912 (50.78%)
FEMALE	883 (49.16%)
NON BINARY	0 (0.00%)
PREFER NOT TO ANSWER	1 (0.06%)
TOTAL FAMILY UNIT MEMBERS	496
FAMILY MEMBERS PAYING HALF DUES	261